

Specifications

Models	Z-34/22 IC 2WD		Z-34/22 IC 4WD	
Measurements	US	Metric	US	Metric
Working height maximum*	40 ft 6 in	12.52 m	40 ft 7 in	12.54 m
Platform height maximum	34 ft 6 in	10.52 m	34 ft 7 in	10.54 m
Horizontal reach maximum	22 ft 3 in	6.78 m	22 ft 3 in	6.78 m
Up and over clearance maximum	15 ft	4.57 m	15 ft 1 in	4.6 m
A Platform length	2 ft 6 in	0.76 m	2 ft 6 in	0.76 m
B Platform width	4 ft 8 in	1.42 m	4 ft 8 in	1.42 m
C Height - stowed	6 ft 7 in	2.00 m	6 ft 9 in	2.06 m
D Length - stowed	18 ft 6 in	5.64 m	18 ft 7 in	5.66 m
E Storage height	7 ft 5 in	2.26 m	7 ft 6 in	2.29 m
A Storage length	13 ft 5 in	4.08 m	13 ft 6 in	4.11 m
A Width	5 ft 8 in	1.73 m	6 ft 1 in	1.85 m
A Wheelbase	6 ft 2 in	1.88 m	6 ft 2 in	1.88 m
A Ground clearance - center	6 in	0.15 m	6.5 in	0.17 m

Productivity

Lift capacity	500 lb	227 kg	500 lb	227 kg
Platform rotation	180°		180°	
Vertical jib rotation	139°		139°	
Turntable rotation	355° non-continuous		355° non-continuous	
Turntable tailswing	zero		zero	
Drive speed - stowed	3.0 mph	4.8 km/h	3.0 mph	4.8 km/h
Drive speed - raised**	0.68 mph	1.1 km/h	0.68 mph	1.1 km/h
Gradeability - stowed***	37%		45%	
Turning radius - inside	5 ft 9 in	1.75 m	5 ft 11 in	1.80 m
Turning radius - outside	13 ft 1 in	4 m	13 ft 6 in	4.11 m
Controls	12V DC proportional / 2 speed		12V DC proportional / 2 speed	
Tires - air-filled	9 x 14.5 in		10 x 16.5 in	rough terrain

Power

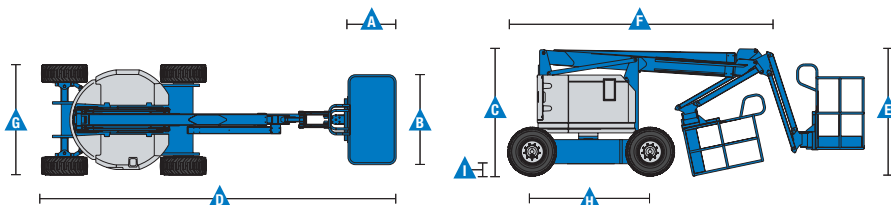
Power source	29 hp (21.6 kW) GM Gas/LPG 26 hp (19.4 kW) Kubota diesel T4f D1105 24.6 hp (18.3 kW) Perkins diesel T4f 403F			
Auxiliary power unit	12V DC		12V DC	
Hydraulic tank capacity	19 gal	71.9 L	19 gal	71.9 L
Fuel tank capacity	9.0 gal	35.2 L	9.3 gal	35.2 L

Weight****

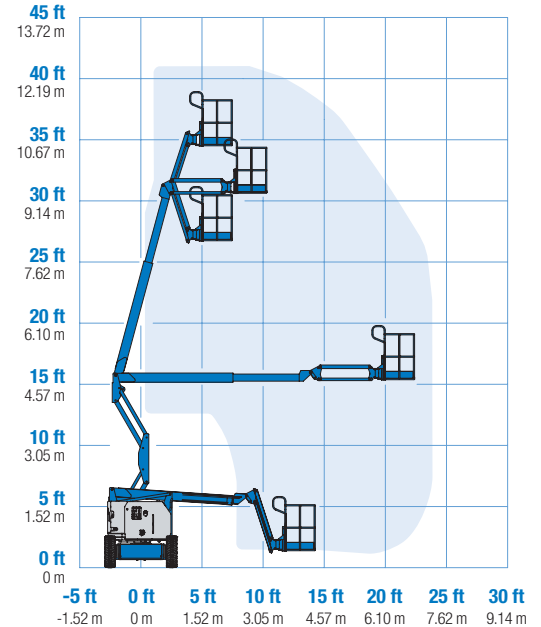
	10,150 lb	4,604 kg	10,450 lb	4,740 kg
--	-----------	----------	-----------	----------

Standards Compliance

ANSI A92.5, CSA B354.4, EN 280, AS 1418.10



Range Of Motion Z-34/22 IC



* The metric equivalent of working height adds 2 m to platform height. U.S. adds 6 ft to platform height.
 ** In lift mode (platform raised), the machine is designed to operate on firm, level surfaces only.
 *** Gradeability applies to driving on slopes. See operator's manual for details regarding slope ratings.
 **** Weight will vary depending on options and/or country standards.

Features

Standard Features	Easily Configured To Meet Your Needs	Options & Accessories
-------------------	--------------------------------------	-----------------------

Measurements

Z-34/22 IC 2WD

- 40 ft 6 in (12.52 m) working height
- 22 ft 3 in (6.78 m) horizontal reach
- 15 ft (4.57 m) up and over clearance
- Up to 500 lb (227 kg) lift capacity

Z-34/22 IC 4WD

- 40 ft 7 in (12.37 m) working height
- 22 ft 3 in (6.78 m) horizontal reach
- 15 ft 1 in (4.6 m) up and over clearance
- Up to 500 lb (227 kg) lift capacity

Productivity

- 4 ft (1.22 m) jib with 139° working range
- Self-leveling platform
- Hydraulic platform rotation
- Proportional joystick controls
- Drive enable
- AC power cord to platform
- Alarm package: Flashing beacon and travel alarm
- Horn
- Hour meter
- Tilt alarm
- Descent alarm
- Zero tailswing and front arm swing
- 355° non-continuous turntable rotation
- Locking turntable covers
- Two speed wheel motors
- Lift Guard™ Contact Alarm
- Dual parallelogram for vertical wall tracking

Power

- 12 V DC auxiliary power

Platform Options

- Steel 4 ft 8 in (1.42 m) with sliding mid-rail (standard)
- Steel 3 ft 10 in (1.17 m) with sliding mid-rail

Jib

- 4 ft (1.22 m) jib boom

Engine Options

- 40hp PSI (GM) .998L gas/LPG
- 26 hp (19.4 kW) Kubota, T4f diesel

Drive Options

- 2WD
- 4WD

Tire Options

- Industrial air-filled*
- Rough terrain air-filled
- Industrial foam-filled*
- Industrial non-marking air or foam-filled*
- Rough terrain foam-filled
- Sealant treated air-filled

Productivity Options

- Platform swing gate
- Lift Guard Platform Mesh - Half
- Lift Guard Platform Mesh - Full
- Platform top auxiliary rail
- Air line to platform
- Specialty hydraulic oil (Cold weather, fire resistant or biodegradable)
- Aircraft protection package**
- Hostile environment kit
- Light package
- Lockable platform control box cover
- Florescent tube caddy***
- Pipe cradle (pair)***

Power Options

- Engine gauge package, Kubota
- AC Generator Packages (110 V / 60 Hz - 220 V / 50 Hz, 2000 W)
- Cold Weather Package
- LPG tank 33.5 lb (15.19 kg) capacity



* 2WD only
 ** Reduces platform weight capacity to 440 lb
 *** Available through aftermarket parts only

Genie United States

6464 185th Ave. NE
 Redmond, WA 98052
 Telephone +1 (425) 881-1800
 Toll Free in USA/Canada +1 (800)-536-1800
 Fax +1 (425) 883-3475

Distributed By:

Effective Date: January, 2019. Product specifications and prices are subject to change without notice or obligation. The photographs and/or drawings in this document are for illustrative purposes only. Refer to the appropriate Operator's Manual for instructions on the proper use of this equipment. Failure to follow the appropriate Operator's Manual when using our equipment or to otherwise act irresponsibly may result in serious injury or death. The only warranty applicable to our equipment is the standard written warranty applicable to the particular product and sale and we make no other warranty, express or implied. Products and services listed may be trademarks, service marks or trade names of Terex Corporation and/or their subsidiaries in the USA and many other countries. Terex, Genie and AWP are registered trademarks of Terex Corporation or its subsidiaries. © 2019 Terex Corporation.