

Specifications

Models Z-45/25J DC

Measurements	US	Metric
Working height maximum*	51 ft 9 in	15.94 m
Platform height maximum	45 ft 9 in	13.94 m
Horizontal reach maximum	25 ft 1 in	7.65 m
Up and over clearance maximum	23 ft 9 in	7.24 m
A Platform length	2 ft 6 in	0.76 m
B Platform width	6 ft	1.83 m
C Height - stowed	6 ft 7 in	2.00 m
D Length - stowed	22 ft 5 in	6.83 m
E Width	5 ft 10.3 in	1.79 m
A Wheelbase	6 ft 8 in	2.03 m
A Ground clearance - center	9.5 in	0.24 m

Productivity

Lift capacity	500 lb	227 kg
Platform rotation	160°	
Vertical jib rotation	135°	
Turntable rotation	355° non-continuous	
Turntable tailswing	zero	
Drive speed - stowed	3.0 mph	4.8 km/h
Drive speed - raised**	0.61 mph	1.0 km/h
Gradeability - stowed***	30%	
Tilt sensor activation	front to back: 2.5° and side to side: 4.5°	
Turning radius - inside	6 ft	1.8 m
Turning radius - outside	14 ft	4.27 m
Controls	24V DC proportional	
Tires	9 x 14.5 in	

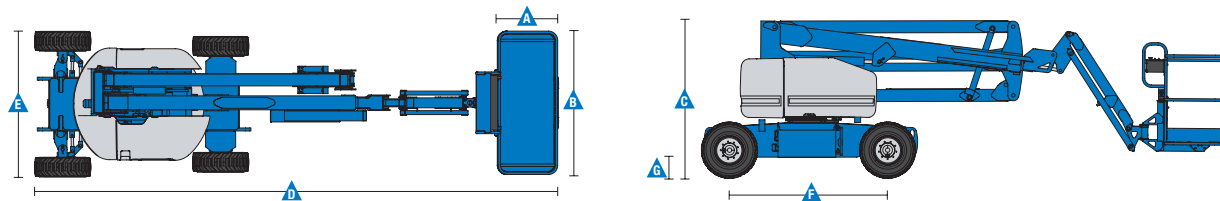
Power

Power source - DC	48V DC (eight 6 V batteries, 350 Ah capacity)	
Power source - Bi-Energy	48V DC (eight 6 V batteries, 350 Ah capacity) with 13.3hp (9.9kW) Kubota T4f Z482 diesel driven alternator	
Auxiliary power unit	24V DC	
Hydraulic tank capacity	8 gal	30.3 L
Fuel tank capacity- Bi-Energy	9 gal	34.1 L

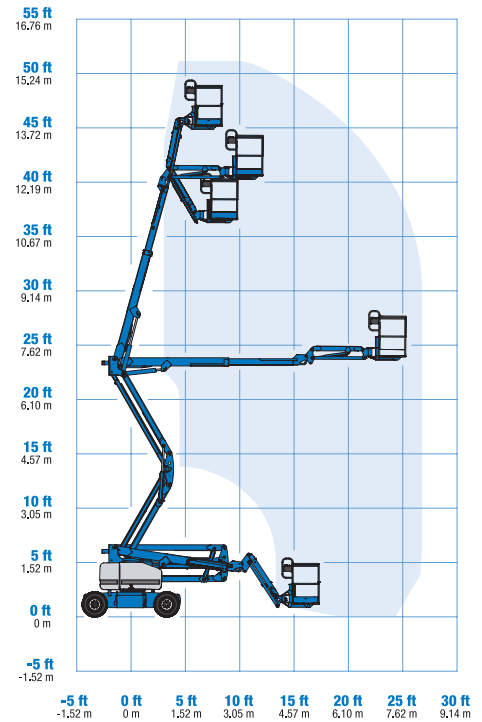
Weight****

DC	16,315 lb	7,400 kg
----	-----------	----------

Standards Compliance ANSI A92.20, CSA B354.6, EN 280, AS 1418.10



Range Of Motion Z-45/25J



* The metric equivalent of working height adds 2 m to platform height. U.S. adds 6 ft to platform height.

** In lift mode (platform raised), the machine is designed to operate on firm, level surfaces only.

*** Gradeability applies to driving on slopes. See operator's manual for details regarding slope ratings.

**** Weight will vary depending on options and/or country standards.

Features

Standard Features

Measurements

Z-45/25J

- 51 ft 9 in (15.94 m) working height
- 25 ft 1 in (7.65 m) horizontal reach
- 22 ft 1 in (6.73 m) up and over clearance
- Up to 500 lb (227 kg) lift capacity

Productivity

- Articulating 5 ft (1.52 m) jib boom
- Self-leveling platform
- Hydraulic platform rotation
- Proportional joystick controls
- Thumb rocker steer
- Drive enable
- AC power to platform
- Horn
- Hour meter
- Tilt alarm
- Zero tailswing
- 355° non-continuous turntable rotation
- Entry toeboard
- Lift Guard™ Contact Alarm
- Dual parallelogram for vertical wall tracking
- Lift Connect™ Telematics
- Lift Tools™ Work Tray
- Platform load sense

Power

- 48V deep cycle battery pack
- 24V DC auxiliary power
- Universal 30A battery smart charger

Easily Configured To Meet Your Needs

Platform Options

- Steel 6 ft (1.83 m) dual entry with side swing gate (standard)
- Steel 3 ft 10 in (1.17m) with sliding mid-rail

Power

- 48V DC (eight 6V 350 Ah batteries)

Drive

- 2WD

Tire Options

- Industrial foam-filled (standard)
- Industrial non-marking foam-filled

Options & Accessories

Productivity

- Lift Guard Platform Mesh - Half
- Platform top auxiliary rail
- Air line to platform
- Specialty hydraulic oil (fire resistant or biodegradable)
- Aircraft protection package*
- Pipe cradle (pair)**
- Alarm package
- Light package
- Lockable platform control box cover
- Tow package
- Operator Protective Structure**
- Fall Arrest Bar
- Florescent tube caddy**
- Lift Tools Expo Installer**

Power

- AGM batteries
- EE UL583 Fire Protection rating
- Battery charge indicator-BCI
- Low voltage interrupt with BCI
- 800 watt inverter



* Reduces platform capacity to 440 lb
** Available through aftermarket parts only

Genie United States

6464 185th Ave. NE
Redmond, WA 98052
Telephone +1 (425) 881-1800
Toll Free in USA/Canada +1 (800)-536-1800
Fax +1 (425) 883-3475

Distributed By:

Effective Date: February, 2020. Product specifications and prices are subject to change without notice or obligation. The photographs and/or drawings in this document are for illustrative purposes only. Refer to the appropriate Operator's Manual for instructions on the proper use of this equipment. Failure to follow the appropriate Operator's Manual when using our equipment or to otherwise act irresponsibly may result in serious injury or death. The only warranty applicable to our equipment is the standard written warranty applicable to the particular product and sale and we make no other warranty, express or implied. Products and services listed may be trademarks, service marks or trade names of Terex Corporation and/or their subsidiaries in the USA and many other countries. Terex, Genie and AWP are registered trademarks of Terex Corporation or its subsidiaries. © 2020 Terex Corporation.